

EUREKA D-SOFT PVT.LTD.

MATCONTRK

STOREMAN



***ORGANIZED INVENTORY WITH PERFECT
MATERIAL TRACKING***

“RIGHT MATERIAL IN RIGHT PLACE AT RIGHT TIME”

MATCONTRK / STOREMAN performs Material Control and Tracking from engineering to procurement of the materials, receipt at store or site / yard till issuance to the sub contractors.

The program efficiently manages multiple MTO'S & revisions at estimation/engineering level, material procurement (including material requests, request for quotation, vendor finalization, purchase request, purchase order), vendor management, material expedition, store/warehouse management(including material receipt, raw material identification reporting, request for inspection, inspection, over/short/damage/reject reporting, inspection clearance, material allocation, material issuance as per request),material monitoring & control, tracking of material after utilization/consumption.

Program can be configured / customized for controlling & tracking the materials as per various disciplines like piping, structural, civil, equipments, Electrical, E&I, HSE, etc.

Piping in line piping components (Elbow, Tee, Reducer, Strainer etc.), Tagged items (Valves, Instruments, Miscellaneous items etc.), Equipment, Structural items (Section, Angle, Channels etc), Concrete items, Electrical items (cable trays, cables, junction boxes, electrical appliances) etc. are managed efficiently.

Manage multiple types of Item codes (Desing / Engineering Code, Procurement Code, Client / Contractor/PMC codes :

In a project a item can be represented using different types of Item code by Client/Design Engineering consultant, Project management consultant, Contractor etc. The program has facility to interlink different type of Itemcodes different Item codes (Procurement Item code, Engineering Item code, Client Item code, PMC Item code, Contractor Item code) used to represent the same component in the project by different groups / disciplines. Material reconciliation can be done in any specific type of Item code.

FINANCE AND ACCOUNTING:

The program facilitates integration with the standard accounting software for cost and accounting purpose. For the purchase of the item available cash flow can be retrieved and decision/ approval can be made. Further to it all the cost expenses can be booked and sent to the accounting software.

MATCONTRK – SALIENT FEATURES

Engineering	PO vs PR	Procurement	Vendor	Construction
Item Code Library	Comparison	Raise Purchase Requisition	Expediting Material Delivery	Store Management
MTO / BOM Rev 0	Material Ordered	Raise Purchase Order	Material not Delivered	Material Delivered
MTO / BOM Rev 1	Not Ordered	Integration with ERP	Material Shortage	STOREMAN Software
Comparison	Under Order	Revised Purchase Order	Material Over Received	
Program Compares required quantity MTO/BOM v/s purchased quantity to make sure sufficient material is ordered.				
Program compares purchase order quantity v/s delivered quantity at store to ensure all ordered materials delivered.				

This Program is integrated with other modules of EPCROMAN like SPOOLMAN / ERMAN for checking the availability of various materials and future planning of the work, based on material availability.

Planning can be done based on various stages of material availability which are as follows:

Material available (Inspected), Material available (non-inspected), Material in transit (PO is raised), Material PO is placed, Material MTO received from the engineering etc.

- A brief statement of the latest MTO quantity item wise, PO quantity, received material etc.
- Cascading material effect: Program can identify the availability of material at various stages for future planning of work and for expanding material flow in advance.

The program takes care of the complete material flow from Engineering MTO till issuance to the sub-contractors (Fabricators).

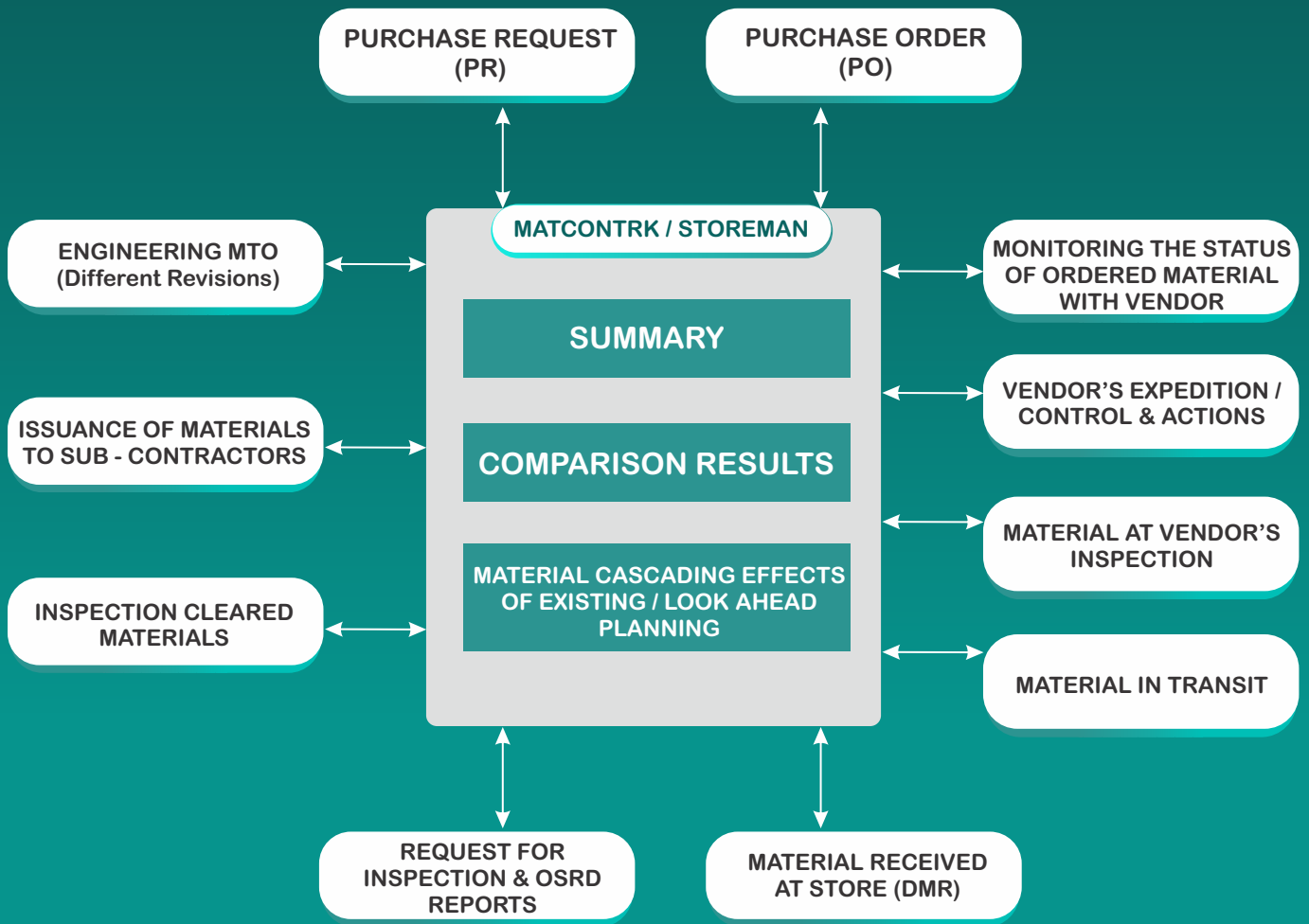


STOREMAN is a software for store / warehouse Management of all plant construction materials received in the central store / site store. This program takes care of all store activities from the material receipt till issuance for construction.

STOREMAN – SALIENT FEATURES

Store Material Receipt	Material clearance	Contractor store Catalogue and space Management
Enter Invoice data	Clearance by QC under contractor and by owner	Dividing the store area in Grids and Blocks
Create Daily Material Receipt (DMR)	Inspection of the material	Managing space according to material specification, item type etc.
Raise Request for Inspection (RFI)	Creation of Over Short Damage Reject Report (OSDR)	Specific material will get specified location
Document Physical Check	Maintaining Over Short Damage Reject Report (OSDR)	
Creation of Over Short Damage Reject Report (OSDR)	Add location for storage	
Maintaining Over Short Damage Reject Report (OSDR)	Attached bar code	
Store Material Issue	Review	Admin
Uploading Material Request (MR) from different contractor	Invoice reconciliation	Creation of access rights
Checking maximum permitted materials before issues	Contractor wise delivery receipt registry / log	Define maximum material allocation list
Creation of delivery receipt for Issue of material	Contractor wise Material request register / log	
Maintaining delivery receipt register	Daily material reconciliation	

THE COMBINED SOLUTION CONSISTING OF MATCONTRK / STOREMAN CAN PERFORM THE FOLLOWING FUNCTIONALITY :



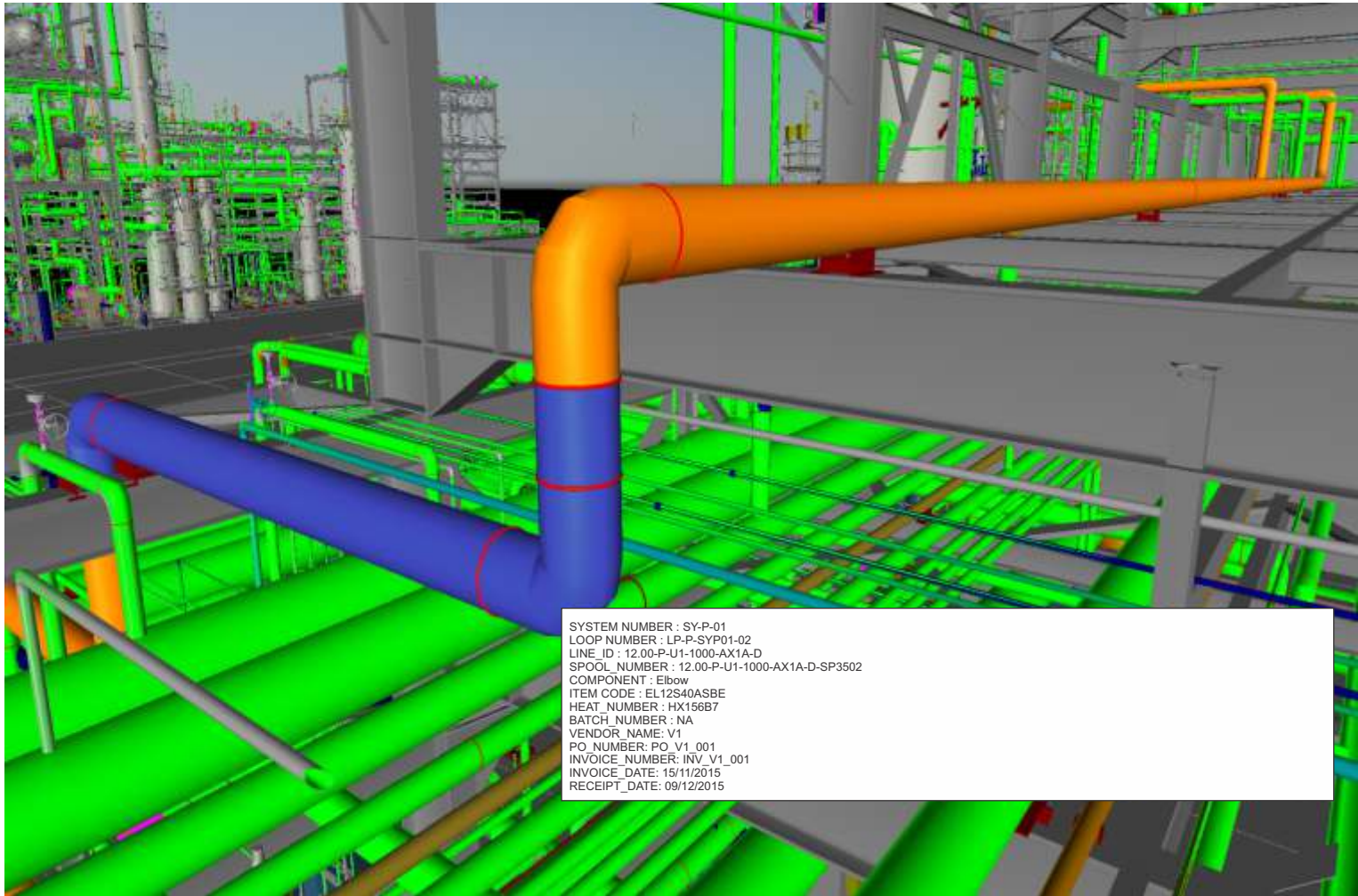
Automation using Barcode & Scanning technology:

Additional customization can be done for material management through Barcode & Scanning technology using Barcodes, Scanners, PDA, Mobile, Tablets and WIFI.



Material traceability review using 3D model:

With the integration of AUTOSPOOL, SPOOLMAN / ERMAN, the material traceability of fabricated/erected component can be customized in 3D model. Program generates 3D dwg file containing 3D model of the piping with all the Material traceability data like heat number, Batch number, Vendor number, PO number, Invoice number, Date of receipt, Issuance, consumption etc. This can be customized & viewed in the 3D model against each component level.



(3D dwg files are imported from AUTOSPOOL for piping. For other disciplines respective 3D formats can be combined using third party review tool.)

GPS & RFID enabled customization:

- GPS enabled tracking of material location. Location of material receipt, material inspection, storage, issuance can be recorded & tracked.
- Automation of approval procedure through scanning RFID tags of Employee / Store Incharge / Contractor representative can be customized at material receipt level, material inspection stage, material issuance stage etc.

Material storage grids & location tracking using barcodes



Stock register :

Stock register of the store / warehouse with the list of different items, total received quantity, quantity available, value of material stock available in store, breakup details of material issued quantity with voucher reference number can be generated readily.



© 2015 by Eureka D-Soft Private Limited. All rights reserved.

All brand names, product names or trademarks belong to their respective holder.